

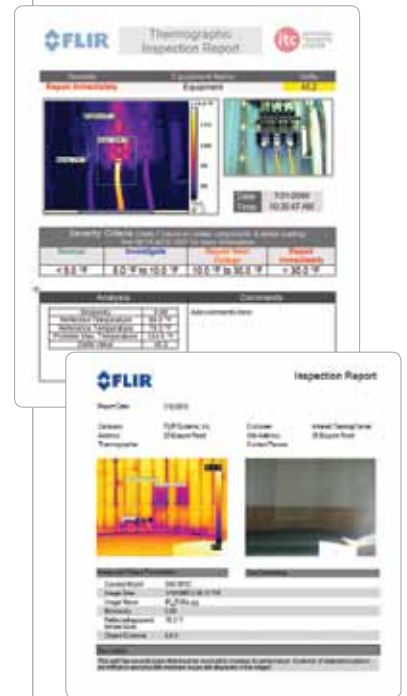
## Advanced Reporting Software for Experts

All FLIR cameras come with the powerful QuickReport analysis and reporting software for importing infrared and visible-light images into an easy-to-read document. Measure, adjust, add notes, and e-mail your reports in PDF format.

Reporter PRO gives you everything you need to complete reports quickly and with total flexibility. Design templates in MS Word®, drag & drop images, and generate multi-page reports. Import measurements, DeltaT analysis, or your own formulas. Automatically add GPS coordinates to images. Even load images and data into Excel and PowerPoint!

GF-Series cameras come standard with VideoReport, FLIR's video editing and annotation software.

**Contact us for more details about these and our other powerful software tools or visit [www.flir.com](http://www.flir.com) to download trial versions.**



## Infrared Training Center

Get the most out of your FLIR investment and advance your career with world-class instruction through the Infrared Training Center. An ITC certificate is written proof of your expertise in operating your camera and interpreting the thermal information it provides.

**For more information, visit [www.infraredtraining.com](http://www.infraredtraining.com).**



## ThermaTrak

Protect your investment with this exclusive, innovative technology from FLIR. ThermaTrak features recovery software to determine the exact geographic position of a lost, missing, or stolen infrared camera so you can let law enforcement know where to track it down. Ask us for details.



# Imaging Specifications

	<b>P620</b>	<b>P640</b>	<b>P660</b>	<b>GF306</b>	<b>GF309</b>
<b>Imaging Specifications</b>					
Resolution	640 x 480	640 x 480	640 x 480	320 x 240	320 x 240
Total Pixels	307,200	307,200	307,200	76,800	76,800
Thermal Sensitivity	<0.04°C	<0.03°C	<0.03°C	<0.025°C	<0.025°C
Accuracy	+/-2% or 2°C	+/-2% or 2°C	+/-1%	+/-1%	+/-1%
Temperature Range	-40°F to 932°F (-40°C to 500°C)	-40°F to 932°F (-40°C to 500°C)	-40°F to 932°F (-40°C to 500°C)	-40°F to 932°F (-40°C to 500°C)	-40°F to 2,732°F (-40°C to 1,500°C)
High Temp Option	x	x	x		x
Lens Options	Standard: 24° x 18°; Optional: 45°, 12°, 7°; Close-up: 50 µ, 25 µ			Standard: 14.5° Optional: 24°	Standard: 24°; Optional: 14.5°, 6°
Zoom	1-2x Continuous Digital	1-8x Continuous Digital	1-8x Continuous Digital	1-8x Continuous Digital	1-8x Continuous Digital
Focus	Auto & Manual	Auto & Manual	Auto & Manual	Auto & Manual	Auto & Manual
Detector	Uncooled Microbolometer	Uncooled Microbolometer	Uncooled Microbolometer	Cooled QWIP	Cooled InSb
Color LCD	5.6"; 1,024 x 600 Pixels	5.6"; 1,024 x 600 Pixels	5.6"; 1,024 x 600 Pixels	4.3"; 800 x 480 Pixels	4.3"; 800 x 480 Pixels
Adjustable Viewfinder	800 x 600 Pixels	800 x 600 Pixels	800 x 600 Pixels	800 x 480 Pixels	800 x 480 Pixels
Video Camera w/ Lamp	3.2 MP	3.2 MP	3.2 MP	3.2 MP	3.2 MP
Fusion	PIP Scalable & Moveable	PIP Scalable & Moveable	PIP Scalable & Moveable		
Laser Spot	x	x	x	x	x
Video Out	Composite	Composite	Composite	HDMI	HDMI
<b>Analysis</b>					
Professional‡	x	x	x	x	x
Delta T	x	x	x	x	x
<b>Annotation</b>					
Voice (60 seconds)	x	x	x		
Text	x	x	x		
GPS			x	x	x
<b>File Storage</b>					
Radiometric JPG	x	x	x	x	x
MPEG Video Recording		x	x	x	x
<b>Other</b>					
ThermaTrak	x	x	x	x	x

‡ Professional analytics tools include DeltaT functionality and multiple movable spots



## BOSTON

FLIR Systems, Inc.  
25 Esquire Road  
North Billerica, MA 01862  
USA  
PH: +1 866.477.3687  
PH: +1 978.901.8000

## PORTLAND

Corporate Headquarters  
FLIR Systems, Inc.  
27700 SW Parkway Ave.  
Wilsonville, OR 97070  
USA  
PH: +1 866.477.3687

## SANTA BARBARA

FLIR Systems, Inc.  
70 Castilian Dr.  
Goleta, CA 93117  
USA  
PH: +1 866.477.3687

## CANADA

FLIR Systems, Ltd.  
5230-125 South Service Rd.  
Burlington, ON L7L 5K2  
Canada  
PH: +1 800.613.0507

# Expert Level Thermal Imaging Cameras

## Features & Specifications

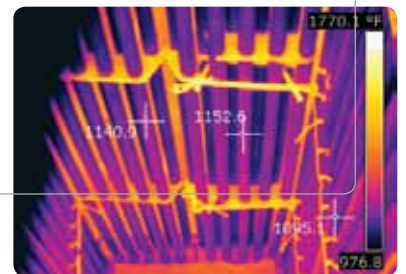
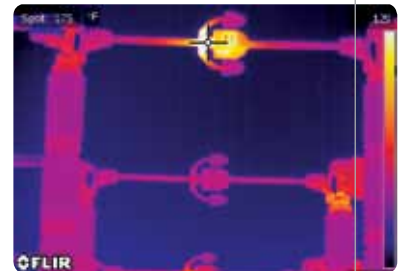
Powerful Infrared Image

Integrated Digital Camera

Real-Time Recording

Ergonomic Viewfinder + LCD Display

Accurate Measurement & Analysis Tools



## P-Series Features

For expert level thermographers, P-Series infrared cameras offer the highest resolution, best image quality, and widest array of options.

**Highest Quality IR Images** – Over 300,000 pixel resolution at 640 x 480 for more temperature measurements, greater precision and accuracy from farther away

**High Thermal Sensitivity** – Most sensitive, uncooled thermal imaging cameras in the world for the finest image details and temperature difference measurements

**3.2 MP Digital Camera with Video Lamp** – High-quality visual camera captures crisp visible light stills and video in all conditions to pair with thermal images

**Adjustable Viewfinder & LCD** – High resolution color viewfinder tilts for ergonomic viewing and use in bright sunlight conditions while large 5.6" LCD makes it easier to share images with co-workers

**Built-in GPS** – Automatically links geographic location of thermal images to Google Earth™ application to tag and track potentially problematic equipment and patterns

**Laser Pointer** – Aligns the thermal image with the physical target for precise documentation

**Scalable P-i-P and Thermal Fusion** – Superimpose thermal images over visible light pictures or blend the two with Fusion for crystal clear results

**Panorama Support** – Take a sequence of images and automatically combine them into a single large image with FLIR Reporter

**Sequential Radiometric Files** – Real-time .seq recording of images and measurements capture data from moving mechanical devices, fluctuating electrical loads, and more for comprehensive post-analysis and reports

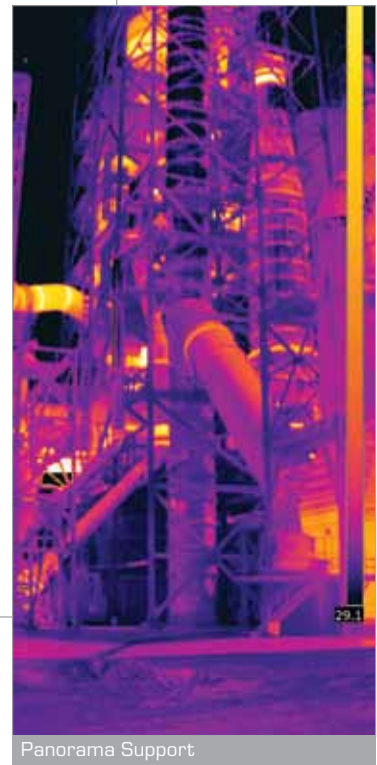
**MPEG-4 Video** – Record high-resolution visible-light and infrared images as digital video



Highest Quality IR Images



Adjustable Viewfinder



Panorama Support

## P620

### Includes:

- 307,200 pixel thermal imagery
- 40 mK sensitivity at +/- 2% accuracy
- 2x digital zoom
- Standard 24° lens
- 3.2 megapixel visible light camera
- Standard measurement functions
- Thermal Fusion & Picture-in-Picture
- Text & voice annotation
- Periodic storage

## P640

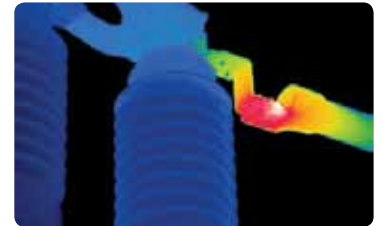
### Additional Features:

- 30 mK sensitivity at +/- 2% accuracy
- 8x digital zoom
- Choice of base optics 24°, 45°, or 12°
- Extended measurement functions
- USB & Firewire connections
- Real-time sequence recording in-camera
- Upgradeable to FLIR P660
- User profiles

## P660

### Additional Benefits:

- 30 mK sensitivity at +/- 1% accuracy
- Built-in GPS
- Panorama function
- Advanced laser pointer
- MPEG-4 on-board video recording



## GF306 SF6 Gas Detection

### Includes:

- 76,800 pixel thermal imagery
- 25 mK sensitivity at +/- 1% accuracy
- Temperature measurement capability from -40° to 500°C
- Standard 14.5° lens; 24° optional
- 8x digital zoom
- 3.2 megapixel visible light camera
- DeltaT and multiple spot measurements
- Built-in GPS
- Onboard video storage

## GF309 Through-Flame Imaging

### Includes:

- 76,800 pixel thermal imagery
- 25 mK sensitivity at +/- 1% accuracy
- Temperature measurement capability from -40° to 1,500°C
- Standard 24° lens; 14.5°, & 6° optional
- 8x digital zoom
- 3.2 megapixel visible light camera
- DeltaT and multiple spot measurements
- Built-in GPS
- Detachable nickel coated heat shield



## GF306 & GF309 Features

For experts who need the power to see invisible gases escaping into the environment, or through flames for industrial furnace and boiler inspections.

**High-Quality IR Images** – GF-Series cameras use high performance cooled detectors to deliver outstanding sensitivity and image quality

**SF6 Detection** – GF306 finds sulfur hexafluoride (SF6) and many other fluorinated gas leaks quickly, accurately, and safely

**Through-Flame Imaging** – GF309 sees through flames with a special midwave “flame filter” for high temperature furnace and fire box inspections, checking burner alignment, and identifying slag buildup

**3.2 Megapixel Digital Camera with Video Lamps** – Digital camera captures clear visible light pictures and video in all conditions to pair with thermal images

**Adjustable LCD and Viewfinder** – High resolution 800 x 480 tiltable finder and large 4.3” LCD that swivels and tilts for safe, ergonomic viewing from any angle

**Built-in GPS** – Automatically links geographic location of thermal images to Google Earth™ application to tag and track potential problems and patterns

**Laser Spot** – Aligns hot or cold spot in IR image with actual physical target

**Extended Measurement** – 10 spotmeters, 5 area boxes, 1 horizontal or vertical live line profile and DeltaT provide detailed analysis

**MPEG-4 Video** – Record high resolution visual light and infrared images as full motion video

